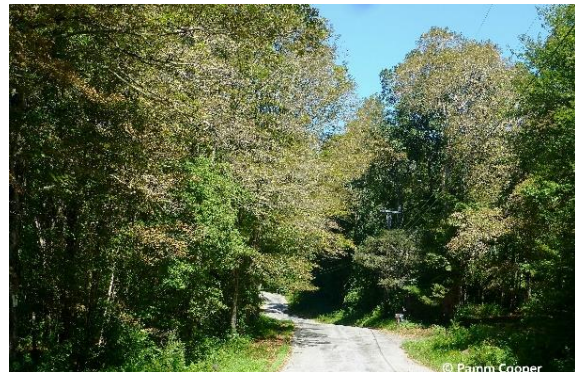


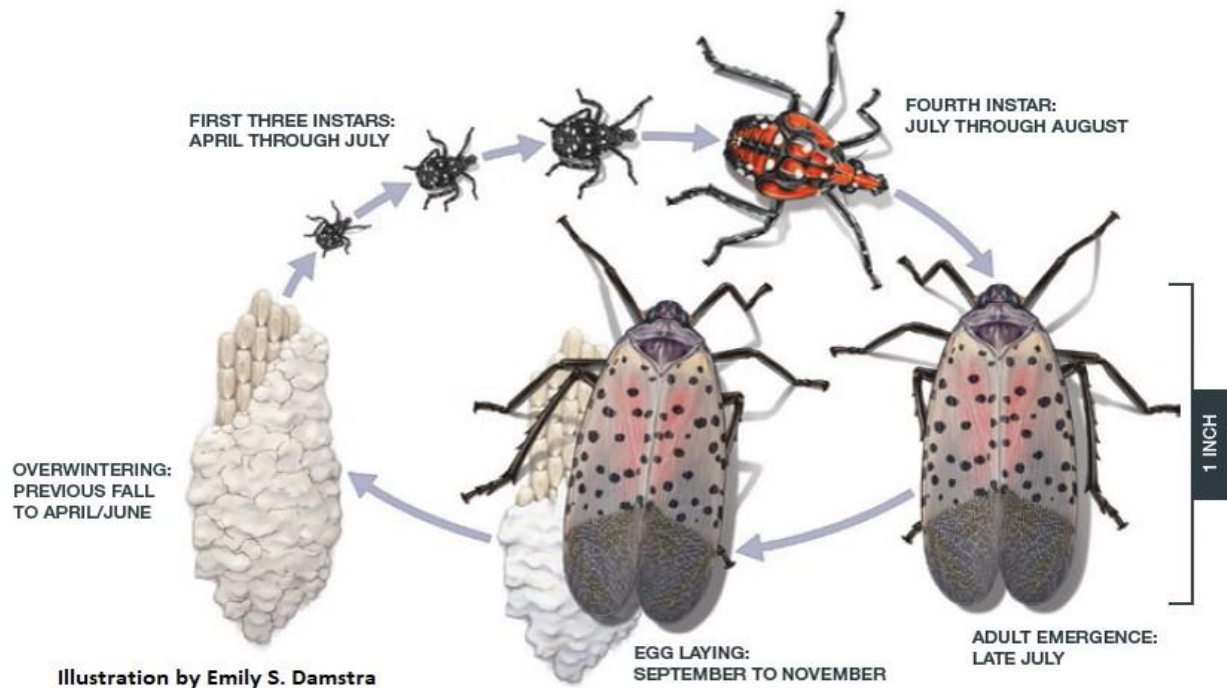


[Printable PDF](#)

September is For Spotted Lanternflies, Maple Anthracnose, and Cardinal Flower



Spotted lanternfly- *Lycorma delicatula*



Lanternflies are invasive planthoppers that have the potential to threaten the health of trees and other woody plants in the Northeast and beyond. They were first detected in Pennsylvania in 2014 but have since been spreading northwards. Tree of heaven (*Ailanthus altissima*) is the preferred host, but spotted lanternfly will feed on numerous other species including fruit trees, grapes, hops, several native deciduous trees and even pines. We have had numerous reports recently from clients about lanternflies on their properties in southwestern CT, with the latest found in Ashford. Report any found to the Connecticut Agricultural Experiment Station and kill them if possible.

Submission report is on this link:

<https://survey123.arcgis.com/share/e1257e88b7924a06a79858096d9187fb?portalUrl=https://USDA-APHIS.maps.arcgis.com>

[Lanternfly Video](#)

Maple Anthracnose



Above left: anthracnose leaf symptoms on maple Right- thinning maple canopies

This year people are noticing that maple leaves appear wilted or browned and heavy leaf drops are premature in many cases. UConn forestry expert, Tom Worthley, says that this “maple leaf phenomenon is a foliar fungus from the anthracnose group. During summers with high humidity and lots of rainfall these fungi can be very active and that is what we are seeing this year. It is not generally fatal unless a particular tree is under some other severe stress, and there is not much that people can do.” Maple anthracnose overwinters in fallen leaves and the disease is worse in natural or wooded areas where the fallen leaves collect from year to year. Along roadsides, this is especially in evidence by the noticeable difference in the leaves of infected maples compared to other trees surrounding them.

[Maple Anthracnose](#)

Cardinal Flower- *Lobelia cardinalis*



Cardinal flowers are native plants found in wet areas like pond edges, bogs and along streams. They will survive short periods of flooding. Flowers are a brilliant red and a hummingbird magnet. Blooming in late summer, this plant is a standout in the landscape. Named varieties are available for garden plantings, including a white one that is not as showy as the original cardinal red.

Cardinal Flower

Insect Pest Highlight- Cutworm Egg Rafts



© Pamm Cooper



© Pamm Cooper

In late summer – fall, cutworms like large yellow underwings, variegated cutworms, and western bean cutworms lay eggs in large rafts. Eggs are white at first and darken just before hatch. Eggs may be laid almost anywhere- on screens, wood posts, leaves of trees, etc. Shown here are cutworm eggs rafts on a blade of grass and on a plastic dog signal flag. When large yellow underwing caterpillars hatch, they immediately balloon to the ground where they will feed, especially on grasses.

Cutworms

Fungus Highlight- Stinkhorns



Stinkhorns

Stinkhorn fungi are aptly named for the putrid, spore-containing slime that attracts the flies that transmit the spores. If they pop up in the garden or lawn, the upper top section can be knocked off. Regrowth will occur next year from "eggs" left in the soil. Dig this out to reduce incidences of stinkhorns next year.

Vegetable Pest Alert

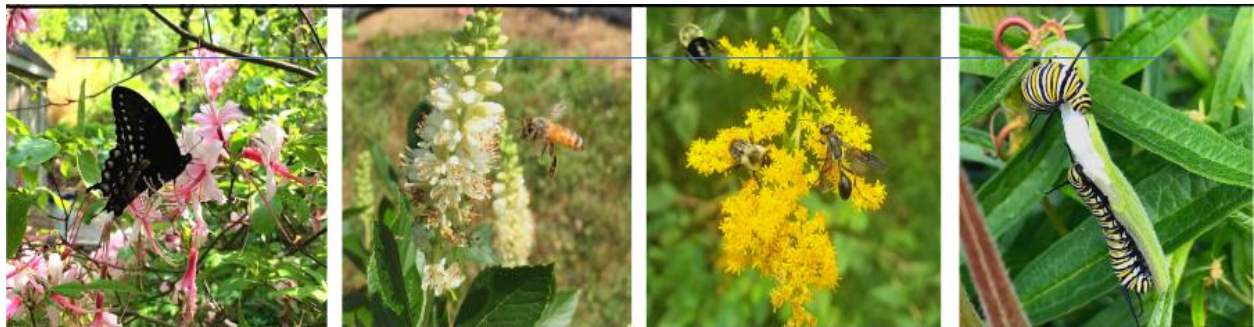
Read the latest Vegetable Pest alert from Shuresh Ghimire, UConn Extension August 26, 2023

From water-logged soils to disease and insect pests, this is an important resource for home and commercial vegetable growers.

Vegetable Pest Alert

UConn Master Composter Program

Registration is open for the [2023 UConn Master Composter Program](#)! Classes consist of two Saturday in person sessions, Sept 16 and 30, and two Thursday night virtual ones, Sept 21 and 28. Two field trips are scheduled for October. Participants will learn about composting and share their knowledge with others in a variety of venues. Check it out! UConn Master Composters make a difference!



UConn | COLLEGE OF AGRICULTURE,
HEALTH AND NATURAL RESOURCES

PLANT SCIENCE AND LANDSCAPE ARCHITECTURE
EXTENSION

NATIVE PLANTS & POLLINATORS CONFERENCE

NOVEMBER 2, 2023 | 8:45 AM - 3:30 PM

**UConn Student Union Ballroom, Room 330
2100 Hillside Road, Storrs, CT**

KNOWLEDGE TO GROW ON- Read our Ladybug blogs written weekly:



[Green Thumb Secrets: Repotting Houseplants](#)

[Late August in the Vegetable Garden](#)

[Acidic Soils Suit Some Plants](#)

[Lawn Care Can Affect Other Plants](#)

[Sign up to receive our blogs by e-mail](#)

Upcoming Events and Things to Do



Old Newgate Prison

[Old New-Gate Prison in East Granby](#)- open Thursday- Monday, Old New-Gate Prison & Copper Mine is nationally recognized as the first chartered copper mine and first state prison in early America.

[Railroad Museum of New England](#) – Located in Thomaston, CT. At the Thomaston Station, there are educational exhibits and trains and other equipment to explore, plus take a train ride to a chocolate factory.

[James L. Goodwin State Forest](#)-Covering more than three square miles the James L. Goodwin State Forest offers recreation for every season of the year. Check website for upcoming events.

[CT Butterfly Association](#) – Saturday, September 30 from 9 am to noon. Monarch tagging at Hammonasset State Park in Madison with Rich Chyinski. Free.

[CT Garlic & Harvest Festival](#) – October 7-8 at Bethlehem Fairgrounds

[Garden Mart](#) – September 16, 2023 sponsored by the CT Chapter of the Hardy Plant Society. From 10am to 3 pm at the Eleanor Buck Wolf Nature Center, 156 Prospect Street, Wethersfield, CT. Shop plants and gardening paraphernalia, including tools, garden whimsey, pots, stakes and supports, and more!

September Gardening Tips

1. Now is the time to de-thatch and aerate lawns to promote root growth if necessary.
2. Remove and compost spent annuals (disease-free) and fallen leaves. Continue to turn and moisten compost piles to speed decomposition.
3. If frost threatens, bring houseplants indoors. Keep in mind that the third week in September is National Indoor Plant Week!
4. Pot up or propagate herbs to bring indoors for winter use.
5. Fall is a great time to plant trees and shrubs. The new plants will have several months to grow new roots before the ground freezes. Consider adding some plants with great fall color.
6. The 2023 [UConn Master Composter Program](#) starts September 16. Sign up now.
7. Plant peonies now, but make sure the crowns are buried only one and a half to two inches below ground level. Planting them deeper than two inches may keep them from blooming.

8. If pesky seedlings of woody plants, such as maple, bittersweet, barberry or others are found growing in your yard, remove them as soon as possible so they won't take over gardens and other landscape plantings. Plants quickly establish sending down long and strong root systems.

9. Wood ashes contain phosphorous, potassium and calcium and can be placed on vegetable gardens and flower beds. Keep in mind the pH of wood ashes is 11.0 and only add them to beds where the pH also needs to be raised.

10. September is a great time to seed or overseed lawns. Consider having the [soil tested](#) to see how much if any limestone or fertilizer needs to be applied.

More September Gardening Tips

Have Your Soil Tested for Macro- & Micro Nutrients: Send your soil sample in for testing now. For details on submitting a sample, go to UConn Soil Nutrient Analysis Laboratory.

[UConn Soil Nutrient Analysis Laboratory](#)



Before We Go...

click on link

Convection: a rapid energy transfer



Convection is the transfer of heat energy via the vertical movement of the air. It is a faster way to transfer energy than conduction. The 'buoyancy' of convection keeps heat rising rapidly off pavements.

Do You Talk to Your Plants?

A recent online survey from [Trees.com](https://www.trees.com) from 1,250 respondents found that 48% of them talk to their plants with 21% conversing with their plants every day! One in four respondents even kissed their plants!



For Gardening Questions Visit our Website:

[UConn Home and Garden Education Center](https://www.uconn.edu/home-garden-education-center)

UConn Extension Home & Garden Education Center: We are on a collaborative journey working together with farmers, families, communities and businesses to educate and solve problems concerning food, health and sustainability.

Join us.

UConn | COLLEGE OF AGRICULTURE,
HEALTH AND NATURAL RESOURCES

PLANT SCIENCE AND LANDSCAPE ARCHITECTURE
EXTENSION

Copyright © 2023 UConn Extension, all rights reserved. UConn Extension is an affirmative action/equal opportunity employer and program provider.

[Unsubscribe](#)

UConn Extension 1376 Storrs Road Unit 4134 Storrs, Connecticut 06269 United States (860) 486-9228

WHAT WE DO AT THE UCONN HOME AND GARDEN EDUCATION CENTER

Plant, insect, and plant disease identification and control options

Advise clients on plant selection and cultural requirements

Receive samples for diagnosis either by drop-off or mail

Give presentations on gardening topics including IPM, pollinators, lawns, invasive plants and insects, landscaping and gardening with native plants, gardening to support bees, birds and wildlife

Staff a booth every year at the CT Flower and Garden Show- bring soil samples for pH testing & your gardening questions

Publish weekly blogs and a monthly newsletter available for free by subscription

Publish fact sheets, newspaper, and magazine articles